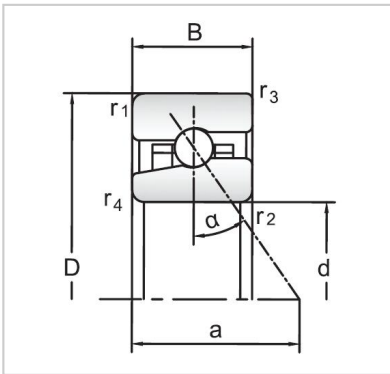


Angular Contact Ball Bearings

High speed Angular Contact Ball Bearings-H71915 C/HC



Bearing NO.	H71915 C/HC
Dimensions(mm)	
d	75
D	105
B	16
Basic Loading Ratings(KN)	
C	22.5
C0	17
Fatigue limit Pu (kN)	0.72
Calculation coefficient	8.5
f0	
Limiting speeds (r/min)	
Grease	20500
Oil	32 000
d1 ~	84.3
D1 ~	95.5
r1,2 min	1
r3,4 min	0.3
a	21
da,db min (mm)	79.6
Da max (mm)	100
Db max (mm)	102.6
ra max (mm)	1
rb max (mm)	0.3
Weight (kg)	0.29